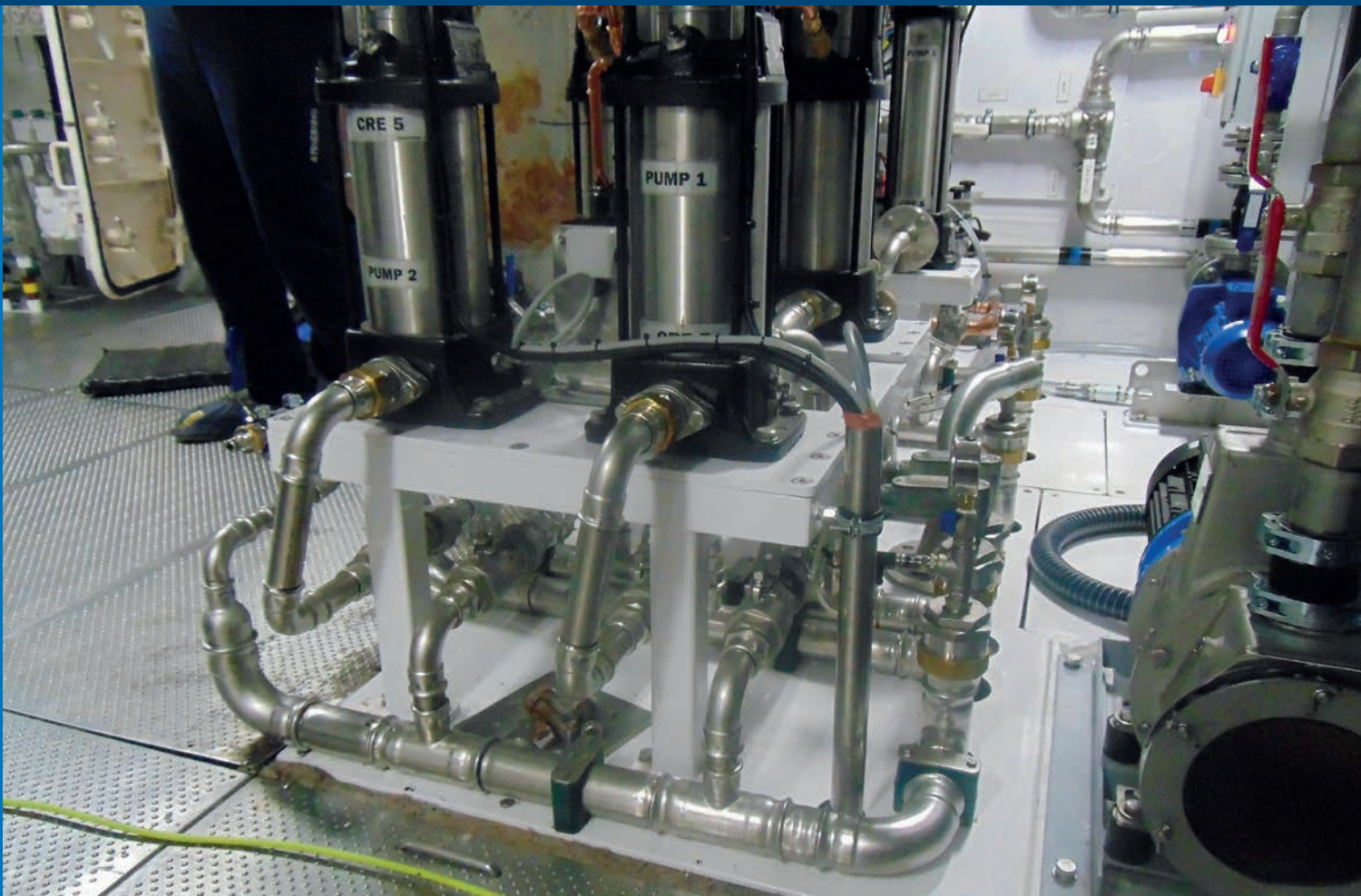




CASE STUDY:
PENDENNIS SHIPYARD
SUPERYACHT REFIT

INNOVATIVE PIPING SOLUTIONS: A SUPERYACHT WITH GEBERIT MAPRESS ONBOARD





CASE STUDY:
**PENDENNIS SHIPYARD
 SUPERYACHT REFIT**

PROJECT OVERVIEW

PENDENNIS SHIPYARD, RENOWNED FOR ITS EXPERTISE IN REFITTING, RESTORING AND CUSTOM-BUILDING SUPERYACHTS, COLLABORATED WITH GEBERIT TO SUCCESSFULLY INTEGRATE GEBERIT'S MAPRESS PIPING SYSTEM INTO A HIGH-END SUPERYACHT PROJECT.

Established in 1988 in Falmouth, Pendennis Shipyard has grown to become a globally renowned company known for handling a diverse range of refit programmes as well as one-off custom-built sail and motor yacht projects.

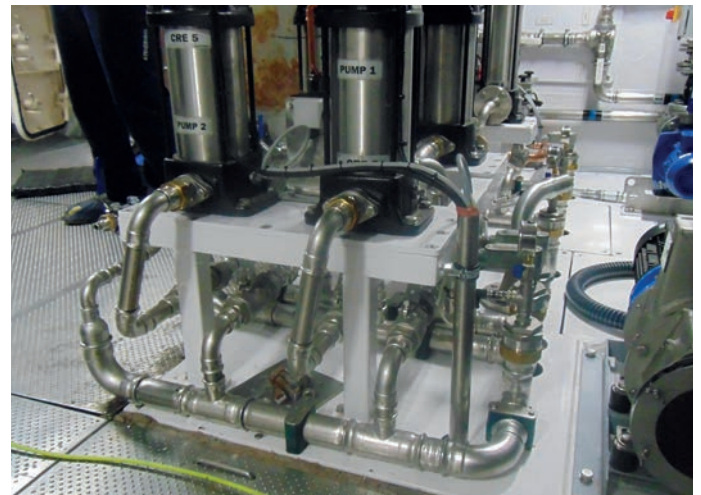
This project involved various stages including gutting the interiors, performing hot works such as fabrication and steelwork, painting, and the installation of new pipework. Unlike conventional installations, boats often lack straight lines, presenting a complex arrangement. To address this challenge, Pendennis Shipyard sought a quality, easy to install solution. With applications ranging from potable water and tank suctions to vent pipework and transit corridor pipework, the shipyard required an efficient, reliable and top-tier piping system.

WHY GEBERIT?

The Geberit Mapress press-fit system was used in stainless steel, copper and CuNiFe across the superyacht project. Under the right conditions, CuNiFe can last well over 30 years and is particularly suited to saltwater applications thanks to its high level of corrosion resistance. Compare this to galvanised steel, the usual material used in marine environments which can corrode and deteriorate within a few years of exposure to saltwater, and CuNiFe is an ideal solution.

Mapress offers a faster and more cost-effective installation approach compared to conventional methods that involve hot works, soldering and threading. The process is straightforward: cut the pipe to the required length, deburr the pipe edges inside and outside, indicate the socket depth on the pipe, insert the pipe into the fitting's socket, and finally, secure the joint and connecting pipe using the pressing tool.

In addition, Mapress provides absolute reassurance with Geberit's all-inclusive technical support and a standard 10 year guarantee.



→ Project information

Location: Pendennis Shipyard

Project Completion: April 2023

→ Geberit Know-How

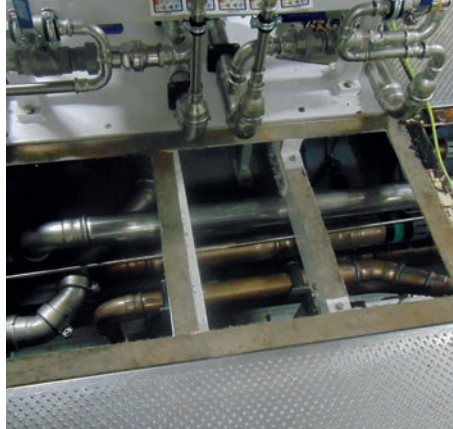
Challenge: To refit the piping system in a superyacht; an unconventional environment which presents challenges due to the lack of straight lines. In addition, the various piping applications require different materials.

Solution: A reliable press-fit piping solution with a simple and flexible installation method. Used in stainless steel, copper and CuNiFe for a variety of applications.



CASE STUDY:
**PENDENNIS SHIPYARD
 SUPERYACHT REFIT**

DELIVERING THE SOLUTION



Pendennis Shipyard, said: "Boat piping installations are often complex due to the lack of straight lines. Geberit's Mapress system simplified this challenge. The press-fit method ensured secure connections, reducing errors during installation."

"HAVING USED GEBERIT MAPRESS IN NUMEROUS PROJECTS, IT'S OUR PREFERRED PIPEWORK SYSTEM. GEBERIT HAS THE ADVANTAGES OF EASY INSTALLATION, DURABILITY, RELIABILITY AND EXCELLENT TECHNICAL SUPPORT."

For more information about Geberit's innovative piping solutions, please visit www.geberit.co.uk/supplysystems